



EDUCATION and MANAGEMENT DIVISION (EMD)

IFCC Council

Istanbul (TR), 22 June 2014

Maurizio Ferrari, Chair EMD

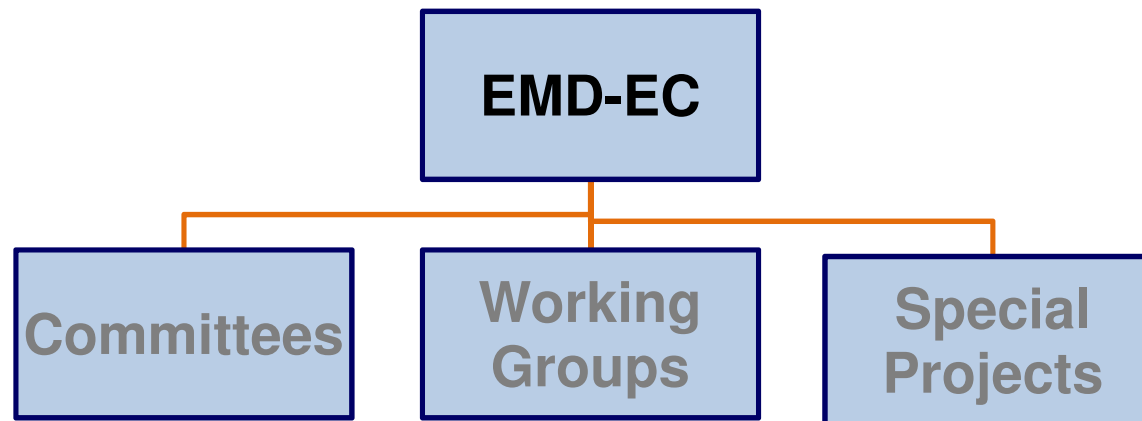


EMD Mission Statement

EMD will provide IFCC members and the healthcare community with the best education relevant to Clinical Chemistry and Laboratory Medicine, directed at scientific, management and clinical issues



EMD Structure



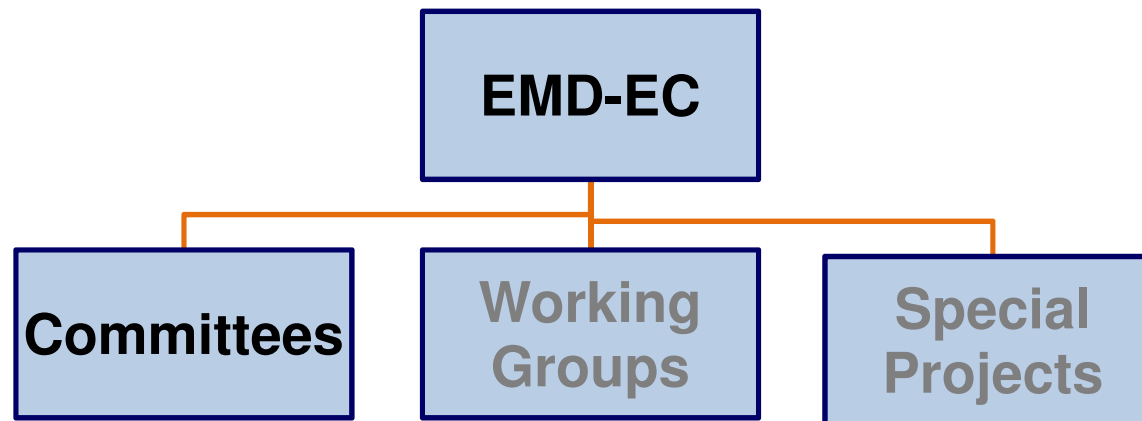


EMD EXECUTIVE COMMITTEE

Members:	Maurizio Ferrari (IT) – Chair	1st 2012-2014
	Elizabeth Frank (IN) – Secretary	1st 2012-2014
	Paolo Fortina (US)	1st 2013-2015
	Ana-Leticia Maselli (GT)	1st 2014-2016
	Christoph Ebert (DE): Corporate Representative	1st 2013-2015
	Silvia Colli-Lanzi: IFCC Office support	



EMD Structure





C-CMBC - COMMITTEE ON CLINICAL MOLECULAR BIOLOGY CURRICULUM

**Remit: Molecular Biology Teaching and Training of
Trainers**

Chair:	Evi Lianidou (GR)	1st 2014-2016
Members:	A. Ferreira Gonzalez (US)	2nd 2014-2016
	V. Haselmann (DE)	1st 2014-2016
	A. Watanabe (JP)	1st 2014-2016



C-CMBC - COMMITTEE ON CLINICAL MOLECULAR BIOLOGY CURRICULUM

Training Courses in basic laboratory methods in molecular diagnostics:

- Malaysia 2012
- Cape Town 2013
- 5 submissions for next courses Ethiopia (2014), Lithuania, Palestine, Romania, Philippines.

Colabiocli 2015, Quito (EC),

Session: “New trends in molecular diagnostics”

Publication of ten years experience in CCA, 2014



C-AQ - COMMITTEE ON ANALYTICAL QUALITY

**Remit: IQC, EQAS management, education in establishment of
IQC and EQA programmes in medical laboratories**

Chair:	Egon Amann (DE)	2nd 2014-2016
Members:	D. Grenache (US)	1st 2013-2015
	A. Haliassos (GR)	1st 2014-2016
	A. Thomas (UK)	1st 2014-2016
	G. Velazquez (PY)	1st 2012-2014



C-AQ - COMMITTEE ON ANALYTICAL QUALITY

- **Database of EQA schemes used around the world**
- **Develop presentations of the “Principles of EQA and IQC with C-DL”**
- **Develop a checklist of items for countries that are planning to set up their own EQA scheme**
- **Update the C-AQ website and finalize the Resource Table for EQA**
- **Offer EQA consultation**



C-EBLM - COMMITTEE ON EVIDENCE BASED LABORATORY MEDICINE

**Remit: Clinical Decision Making, Liaison and collaboration with
bodies producing guidelines, Courses, Web-site**

Chair:	Rob Christenson (US)	2nd 2012-2014
Members:	D. Aslan (TR)	2nd 2012-2014
	H. Fares Taie (AR)	2nd 2014-2016
	C. Florkowski (NZ)	2nd 2012-2014
	K. Rodriguez-Capote (CA)	2nd 2014-2016



C-EBLM - COMMITTEE ON EVIDENCE BASED LABORATORY MEDICINE

- **Educational sessions throughout South America and Central America (H. FaresTaie)**
- **EBLM Symposium at WorldLab 2014, “Evidence Based Laboratory Medicine in decision making: a value-based business perspective”**
- **WorldLab Lecture: R Christenson: “The laboratory medicine best practice program: an evidence-based approach to laboratory medicine”.**



C-EBLM - COMMITTEE ON EVIDENCE BASED LABORATORY MEDICINE

- **H. FaresTaie - Two presentations “EBLM and Interprofessional Informatics in healthcare” at the National Congress of Ecuador, Guayaquil May 2 to 4, 2014.**
- **Presentation at the National Congress of Biochemistry Residents: COREBIO. May 14, 2014, Buenos Aires: Informatics in healthcare and EBLM**
- **Course/workshop at the National Congress of Chile, August 7, 2014. Duration: 7 hours. Topic: EBLM**
- **Presentation of EBLM in Quito, Ecuador. FEFAS Congress, in October 2014.**
- **Post- graduate Course in Paraguay. One-week EBLM course in November, 2014**

- **Dr. Chris Florkowski presented an EBLM topic at the Asia Pacific Federation of Clinical Biochemistry (APFCB) in Bali**

- **Diler Aslan spearheaded update to the C-EBLM part of the IFCC website.**



C-CLM - COMMITTEE ON CLINICAL LABORATORY MANAGEMENT

Remit: Management issues

Chair:	Sedef Yenice (TR)	1st 2014-2016
Members:	R. Erasmus (ZA)	2nd 2014-2016
	M. Kuti (NG)	1st 2014-2016
	M. Srour (Palestine)	1st 2012-2014
	T. Sian Hwa (ID)	1st 2014-2016



C-CLM - COMMITTEE ON CLINICAL LABORATORY MANAGEMENT

2012 Monograph: Quality of Management & Quality of Analysis –A Handbook for developing Countries - Jointly developed by C-CLM and C-AQ

Future activities:

- **Produce an IFCC monograph on Clinical Laboratory Management**
- **Conduct a needs assessment of developing countries and draw up a prioritized list of future projects, together with timelines for completion and cost estimates;**
- **Closely co-operate with the Visiting Lecturer Programme, EMD working groups (DQCML and WG-LEPS) and other EMD committees and SD committee on Reference Intervals and Decision Limits (C-RIDL) to effectively and efficiently ensure that the correct management resources are applied to the right place at the right time for a reasonable cost.**



C-DL - COMMITTEE ON DISTANCE LEARNING

Remit: e-learning

Chair:	Janet Smith (UK)	1st 2012-2014
Members:	R. Greaves (AU)	1st 2012-2014
	D. Gruson (BE)	1st 2012-2014
	E. Hoyaranda (ID)	1st 2012-2014
	vacancy	

- **Collaboration with the Communications and Publications Division Committee on Internet and eLearning (CPD C-IeL) to develop an IFCC strategy for distance learning**



C-DL - COMMITTEE ON DISTANCE LEARNING

- **The audio and video recording of the symposium on reference intervals, at the APFCB Congress went ahead and we are currently waiting for permissions to post the material on the website from some of the speakers.**
- **In dialogue with Siemens on collaboration for distance learning modules**
- **Contact with Whitehat Communications, who works with diagnostic companies in the preparation of distance learning materials. There are now links to some of this material from the IFCC website**
- **Ronda Greaves has gained the appropriate permissions to have the proceedings of Chemical Pathology courses organised in Vietnam, in which she is heavily involved, published on the website and she arranged for presentations on mass spectrometry, which formed part of the recent AACB Congress, to be recorded and the intention is for these to form modules for the website.**

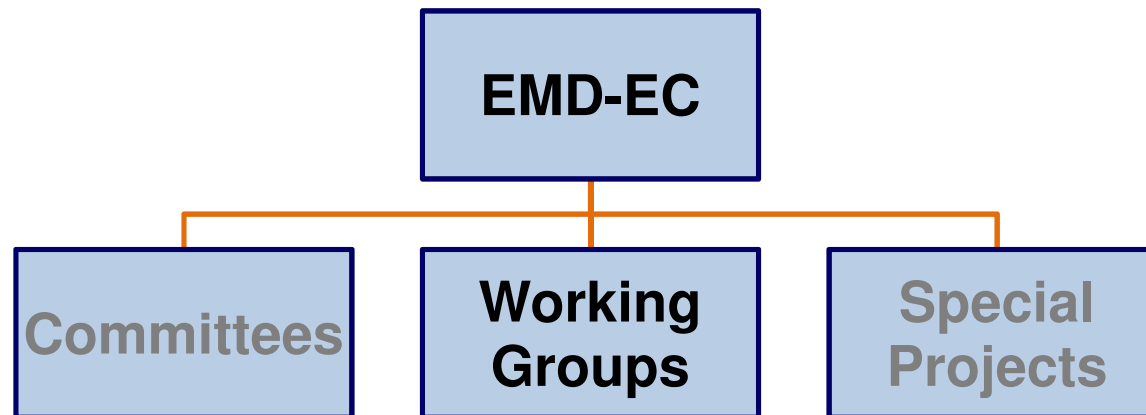


C-DL - COMMITTEE ON DISTANCE LEARNING

- **Meeting with Waters Inc in Milan to discuss collaboration on distance learning material in the topic area of mass spectrometry.**
- **In the process of developing an ‘eAcademy’, to provide a structure for the educational material. They are therefore developing an IFCC curriculum, based on curricula content received from National Societies following a recent appeal.**
- **Provide a considerable amount of support to the Pathskool initiative, a project of Ortho Clinical Diagnostics, which IFCC is collaborating with. It is anticipated that the material from the Pathskool project will be a valuable resource within our eAcademy.**



EMD Structure





WG-LEPS - WORKING GROUP ON LABORATORY ERRORS AND PATIENT SAFETY

Chair: Laura Sciacovelli (IT)

1st 2014-2016

- **“Project Model of Quality Indicators”**
- **The purpose of the project is to design a routine, formal, proactive system of monitoring that uses validated measures to focus strictly on laboratory performance creating a common reporting system based on standardized data collection, and to define the state-of-the-art and quality specifications for each QI**
- **The final goal is to define a Model of Quality Indicators (MQI)**



WG-LEPS - WORKING GROUP ON LABORATORY ERRORS AND PATIENT SAFETY

- **WG LEPS has organized a Consensus Conference to design a road map for the harmonization of QIs. The Conference, held in Padova on October 24th, 2013 and titled “Harmonization of quality indicators: why, how and when?”**
- **A questionnaire has been prepared in order to collect data by potentially interested clinical laboratories that, up to now, have no experience in the management of QIs;**
- **Website developed, which will be accessible from the IFCC website**
- **Anxious to have more input from national societies in his project on quality indicators (QIs)**



WG-FLOW CYTOMETRY

Chair: Ulrich Sack (DE)

2nd 2014-2016

**IFCC/ESCCA Beckman CoulterFlow Cytometry Course
11-13 April 2013, St. Etienne, France**

Last IFCC-Beckman Course:

“Harmonisation and Standardisation in Flow Cytometry”

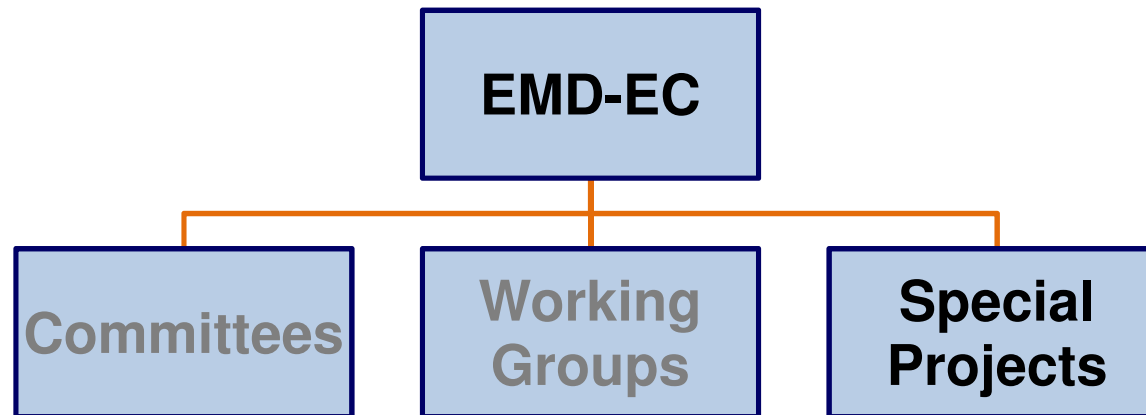
Wien, 24-26 April 2014

Scandinavia in 2015 (Beckman)

Brasil or Argentina in 2015?



EMD Structure





IFCC-ABBOTT VISITING LECTURER PROGRAMME (VLP)

Chair: Elizabeth Frank (IN)

- **Applications should be submitted to the VLP Chair**
- **Collaboration within and between countries welcomed to increase effectiveness**
- **Form to be downloaded from IFCC**



IFCC-ABBOTT VISITING LECTURER PROGRAMME (VLP)

Number of events 2013-14 (December):

31 Visiting Lecturer Programmes in 24 months.

22 countries involved:

**Algeria , Argentina, Bolivia, Chile, Cyprus, Greece,
Guatemala, Ecuador, India, Jordan, Mexico, Norway,
Palestine, Philippines, Poland, Romania, Russia,
South Africa, Uruguay, Vietnam, Zambia, Zimbabwe**



DQCML - Project for developing quality competence in medical laboratories

Chair: Michael Thomas (UK)

2nd 2012-2014

- **This major initiative for the EMD is aimed at informing emerging laboratory services on all aspects of quality, but concentrating particularly on internal quality control, external quality assessment and working towards laboratory accreditation with the adoption of a quality system**
- **Objective is to develop transferable education templates**
- **Two components originally defined:**
 - analytical quality**
 - quality systems and accreditation**



DQCML - Project for developing quality competence in medical laboratories

- **A ‘Looking Forward’ workshop was held in May 2013 under the chairmanship of the IFCC President, Graham Beastall, to consider a more proactive role for DQCML in supporting the development of quality laboratory medicine in emerging nations. In particular the workshop examined the WHO-Afro stepwise approach to laboratory accreditation and how DQCML and EMD may align with this program. A leaflet has been designed by the Immediate Past-President Professor Jocelyn Hicks together with Executive Board Member and the Past-President of the African Federation of Clinical Chemistry Professor Vanessa Steenkamp, to assist developing countries in understanding the programmes that are available for Member associations and their individual members.**
- **A formal application process has been developed together with the requirement that supported country feedback on the benefits of the support received.**



DQCML - Project for developing quality competence in medical laboratories

- **Dr. Ian Watson delivered lectures in St. Petersburg and Moscow on “The Interpretation of Laboratory Tests”. The lecture in Moscow was broadcast to a number of other cities across the Russian Federation.**
- **Approval has been given for Dr Herbert Stekel to visit Russia at the invitation of the Russian Scientifically-practical society of Specialists in Laboratory Medicine (RSPSSLM). Dr Stekel will give a plenary lecture at the Annual Russian Meeting "National Days of Laboratory Medicine", in Moscow, to be held between 1st and 3rd October 2014. Dr Stekel will also be invited to speak at a Symposium on POCT within the same meeting.**



DQCML - Project for developing quality competence in medical laboratories

Pending Applications and Further Initiatives

- **Association of Clinical Biochemists of Sri Lanka**
- **Hong Kong Society of Clinical Chemistry**
- **Sub-Saharan Africa**

- **Zambia Quality Assurance Programme under the direction of Renze Bais a collaborative venture with the Biomedical Society of Zambia, IFCC and Randox is establishing a QA programme in Zambia.**

- **Africa Schemes and Mentoring by Professor Donald Young**

- **The eAcademy concept being developed by C-leL and C-DL led by Peter Vervaart and Janet Smith**



EDUCATION and MANAGEMENT DIVISION (EMD)

**Contact the EMD through the
IFCC web-site or contact the IFCC Office**

www.ifcc.org

Thank you for your attention and for your support